

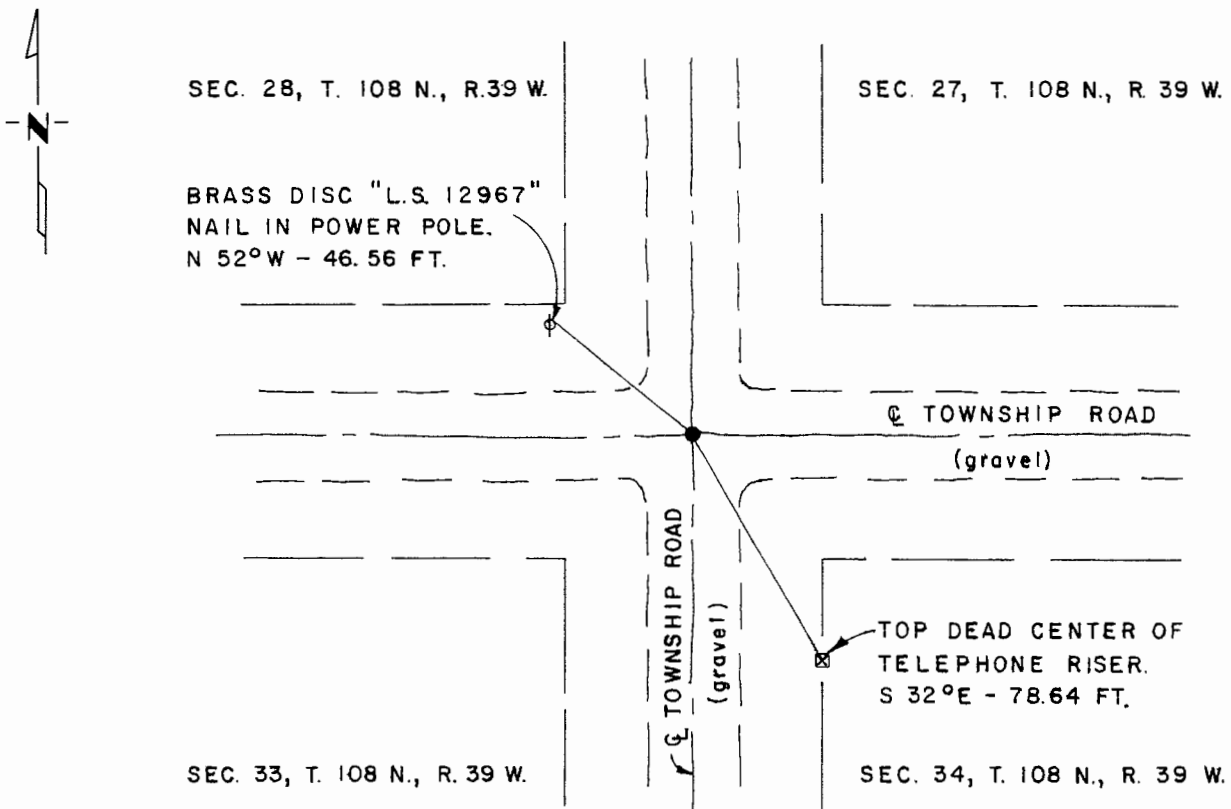
CERTIFICATE OF LOCATION OF GOVERNMENT CORNER

Northwest Corner of Section 34, Township 108 N., Range 39 W., 5th P.M.
 STATE OF MINNESOTA, County of Murray

At the corner location shown on the sketch:

- On Oct. 9, 1980 found a wooden lath and rotted hub at township road center
DATE
line intersection
 - left monument as found, lowered monument, removed monument (explain)
- On Oct. 9, 1980 placed a 1/2" iron reinforcing bar with "L.S. 12967" cap over
DATE
said lath and hub.

SKETCH OF REFERENCE TIES



I hereby certify that this document and the data contained herein was prepared by me or under my direct supervision.

Gay D. Nantz 12/28/81
SIGNATURE DATE

Registration No. 12967
 Land Surveyor, Professional Engineer
 County Surveyor, County Engineer

OFFICE OF THE COUNTY RECORDER
 County of Murray

I hereby certify that this document was filed in the Co. Recorders office at 10 A.M. on the 18th day of February A.D., 1982

County Recorder *Willard W. Ohme*
 By _____, Deputy

DOCUMENT NO. _____